

The House Models at

CATALUNAN SOUTH POINTE HOMES

CATALUNAN GRANDE, DAVAO CITY



DEVELOPER

Sales Office: 2A Carriedo Bldg., JP Laurel Ave., Bajada, Davao City Philippines 8000

Telefax: (082) 227-8372/ 227-8566

Website:

www.urbaneastdevelopments.com



“Sabina”

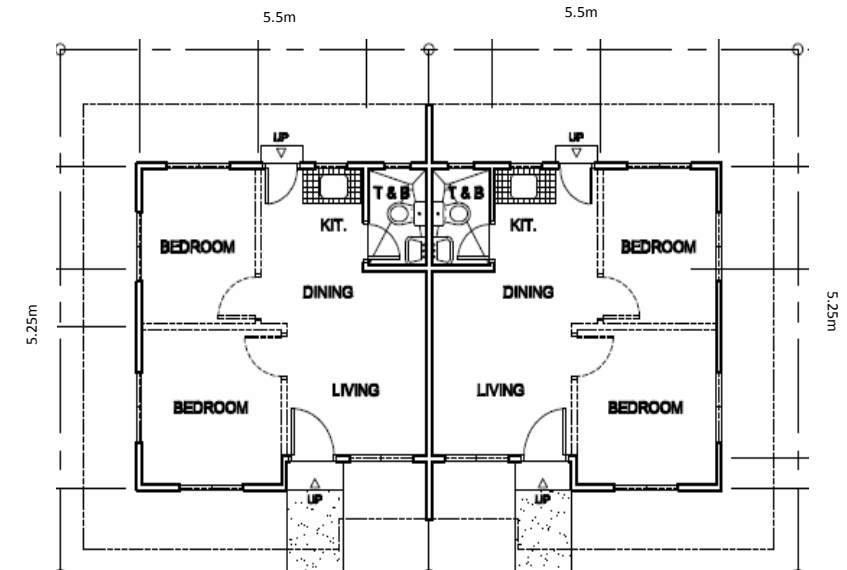
All Model Specifications:

1. Duplex-type Core House (with bathroom walls; no bedroom partitions)
2. All roofing panels pre-painted GI color roof; steel trusses
3. Red cement smooth-finished flooring
4. Front panel door, back exit flush-type door, T&B PVC door
5. All Hardiflex (cement board) ceilings interior and exterior
6. Flush-type water closet with sink and ceramic floor tiles at toilet and bath
7. All exterior walls painted
8. Kitchen counter with ceramic tiles and enamel sink provided
9. All jalousie windows, double-bladed
10. Regular Approx Lot Area: 60 sq.m. All models Approx. Floor Area: 28.8 sq.m. per unit



“Patricia”

All Model Floor Plans (Duplex Building, 2 units per duplex):



*** Please note that bedroom partitions, shown here in broken lines, are for visualization/ suggestion purposes only.

Disclaimer: For general announcement, visualization, and illustrative purposes only, no part of this material constitutes an absolute offer or guarantee to build or develop on the part of the Developer. Any of the details contained herein may change without prior notice. The final development and building working plans, perspectives, floor plans, common spaces, facilities, amenities, features, and characteristics of this project and property and/or house models may change without prior notice. Although utmost care was taken in the preparation of the contents herein, interested parties are encouraged and invited to verify the final details of this project from the Developer so that the most updated and complete information and details are known. **All permits to develop and sell this property are pending; the Developer is not yet accepting any payments whatsoever towards the final and absolute purchase of any property associated with this project. (Jan. 2011)**